



# NWZLTR

January — April 2008

Volume. 1 Number.1

## Inside this issue:

Information Skills	2
How do I check my Library account online	2
Crossword Puzzle	3
Trivia	4
Book Review	4
Journals title changes	4
Trivia Answer	5
Crossword Puzzle answer key	5

## Points of Interest

- This newsletter is published at the beginning of each semester.
- The Library/LRC Hour are:  
Monday—Thursday  
7:00am—10:30pm
- Friday 7:00am—5:00pm
- Saturday & Sunday  
9:00am— 10:30pm

## From the Director's Desk

### Welcome!

Welcome to the first issue of the newsletter of the Stanley Mark Dennis Veterinary Medical Library and Learning Resource Center (SMDVML/LRC). We plan to publish one issue at the beginning of each semester in an effort to keep the community informed about the Library/LRC and its services.

The clients of the SMDVML/LRC are an important part of the community. This newsletter, is designed to provide you with information about: the library/LRC; our needs, changes; collections; and services. The Library/LRC is a dynamic vital component of the University. You the patrons are the reason

that we can fulfill our part of the University's strategic plan. We want to insure that you know what we are doing and why!

By informing you about the information resources available to the University's students and faculty we hope to keep you abreast of how the Library/LRC serve the University and how your recommendations and suggestions contribute to the service.

We would also like to hear from you about how the Library/LRC influenced your academic career and life at Ross. We would like to share

these stories in future issues of the Newsletter. Please send us your stories via e-mail to [sklib@rossvet.edu.kn](mailto:sklib@rossvet.edu.kn)



## Frequently ask Question

**Q.** Is there a check-out limit for books?

**A.** Students may check-out a max of 4 books at a time.

**Q.** Can I renew books by phone...for how long?

**A.** Yes. Call the Circ Desk: 465-4161 x124 With all renewals you get 7 additional days. But books with "hold" or "reserve" are never renewed

**Q.** Is it okay for a friend to return a book for me?

**A.** If the book is checked out in your name; you are

The person responsible for its prompt & safe return;

If the book gets misplaced, damaged or lost en route..... you are the one who pays.

# Information Skills

## Question:

What is the difference between a library catalog search for **BSE** or **Mad Cow Disease** and a literature search (searching bibliographic databases)? i.e. Medline/PubMed or Agricola

## Answer:

With a **catalog** search you identify & locate books, (and non-print materials) **owned** by the library, **e.g.:**

[Mad cow U.S.A. / by Sam Rampton. SF 961 .R48 1999 \[book\]](#)

[Mad cow \[still photo\]](#)

[Mad cow \[CD\]](#)

When you do a **literature search** you find **citations** to articles, on some topic of interest..., **e.g.:**

[Human 'Mad Cow' Could Cause Eventual Epidemic / by News Target. J. Am. Vet. Med. Assoc., 2001; 218\(5\): 646-647.](#)

## How Do I check my Library account online

1. Go to the Ross homepage; **www.rossvet.edu.kn**
2. On the left click on the "Library/LRC" link
3. Click on "Library Catalog"
4. On the top of the page click on "My Account"
5. A drop down menu will appear, you will see, "My Profile", "Checkouts", "Charges", "Holds" etc. Click on the link you desire.
6. A log in screen will appear next . You User ID and Password is the numbers on your Library barcode.

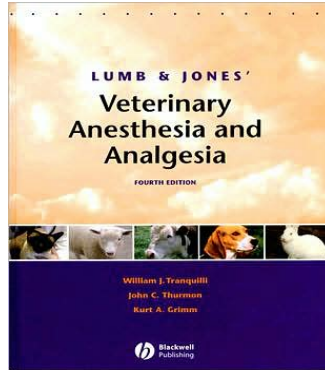
**"Example"** User ID : 2 0000 00000 123

Password: 2 0000 00000 123

## Book Review

### Editorial Review; From the Publisher of:

Lumb & Jones' veterinary anesthesia and analgesia / 4<sup>th</sup> ed. Edited by William J. Tranquilli, John C. Thurmon, Kurt A. Grimm. 2007



Lumb & Jones' is the definitive reference in veterinary anesthesia and analgesia, covering all large and small animal species and a full array of clinical conditions and diseases. This new edition is greatly expanded and revised - an essential and comprehensive text for anyone with a special interest in animal anesthesia and analgesia. The ever-increasing importance of pain management is highlighted by new chapters on pain physiology, analgesic medications, acupuncture, physical rehabilitation, and palliative analgesia, and most noticeably is reflected in the book's new title, Lumb & Jones' Veterinary Anesthesia and Analgesia. This edition brings together over 65 authors, offering a wide breadth and depth of expertise with contributions from anesthesiologists, pharmacologists, surgeons, criticalists, internists and other clinical specialists. Extensive species chapters span the range of small and large animals, including expanded coverage of laboratory, exotic and zoo animal species, aquatic mammals and fish. Later chapters provide detailed coverage of important considerations for specific diseases and types of patients and procedures, including new chapters on the anesthetic management of dental, cancer, orthopedic and equine colic patients. Preliminary sections cover the general principles of anesthesia, physiology and pharmacology, equipment and monitoring, and anesthetic and analgesic techniques. New edition of the definitive reference in veterinary anesthesia Expanded focus on pain management Written by international team of experts including more than 65 contributing authors Covers anesthesia management of domestic and wild species and full array of clinical conditions and diseases

## Journals with title changes

- **AMERICAN ASSOCIATION OF BOVINE PRACTITIONERS**

**CONFERENCE: PROCEEDINGS 1079-9737** (FORMERLY PROCEEDINGS OF ANIMAL CONVENTION).

- **ANIMAL SCIENCE JOURNAL 1344-3941** (FORMERLY ANIMAL SCIENCE TECHNOLOGY)

- **CANADIAN JOURNAL OF VETERINARY RESEARCH = REVUE CANADIENNE RECHERCHE VETERINAIRE 0830-9000** (FORMERLY CANADIAN JOURNAL OF COMPARATIVE MEDICINE)

- **CIWM JOURNAL 1751-5602** (FORMERLY WASTE MANAGEMENT 0263-8126)

- **COMPARATIVE MEDICINE 1532-0820** (FORMERLY LABORATORY ANIMAL SCIENCE)

- **COMPENDIUM: CONTINUING EDUCATION FOR VETERINARIANS 0193-1903** (FORMERLY COMPENDIUM ON CONTINUING EDUCATION FOR PRACTICING VETERINARIANS 0193-1903)

- **LEARNING AND BEHAVIOR** (FORMERLY ANIMAL LEARNING AND BEHAVIOR).

- **MEDICAL MYCOLOGY** (FORMERLY JOURNAL OF MEDICAL AND VETERINARY MYCOLOGY).

- **ZONOSSES AND PUBLIC HEALTH** (FORMERLY SWINE HEALTH AND PRODUCTION)

- **HISTORIAMEDICINAE VETERINARIAE 0105-1423** (FORMERLY EUROPEAN SECTION OF HISTORIA MEDICINAE VETERINARIAE)

- **HORSE 1081-9711** (FORMERLY MODERN HORSE BREEDING)

- **IRISH VETERINARY JOURNAL 0386-0762** (FORMERLY REFUAH VETERINARITH)

- **JOURNAL OF AVIAN MEDICINE AND SURGERY 1082-6742** (FORMERLY JOURNAL OF THE ASSOCIATION OF AVIAN VETERINARIANS 0892-9904)

- **JOURNAL OF CLINICAL PATHOLOGY 0021-9746** (FORMERLY CLINICAL MOLECULAR PATHOLOGY 1366-8174)

- **JOURNAL OF SOUTH AFRICAN VETERINARY ASSOCIATION 0301-0732** (FORMERLY JOURNAL OF SOUTH AFRICAN VETERINARY MEDICAL ASSOCIATION).

- **JOURNAL OF SWINE HEALTH AND PRODUCTION 1537-209X** (FORMERLY SWINE HEALTH & PRODUCTION 1066-4963)

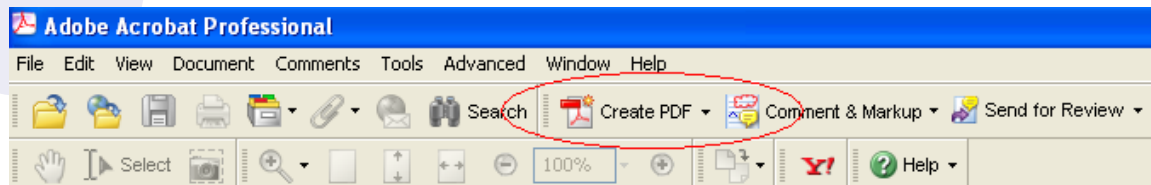
- **JOURNAL OF ZOO AND WILDLIFE MEDICINE 1042-7260** (FORMERLY JOURNAL OF ZOO ANIMAL MEDICINE)

# How to Scan a document or picture in the LRC

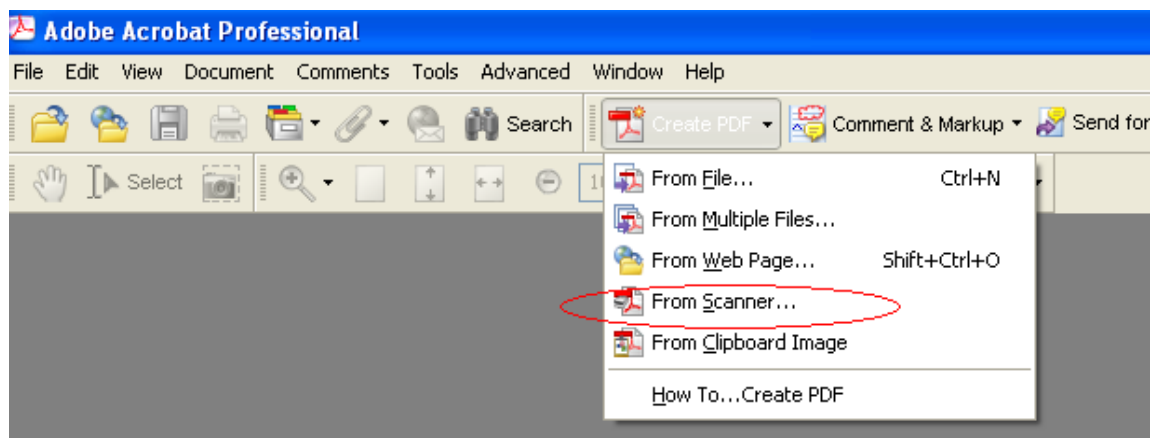
- On the desktop click on the “Adobe Acrobat Professional” icon



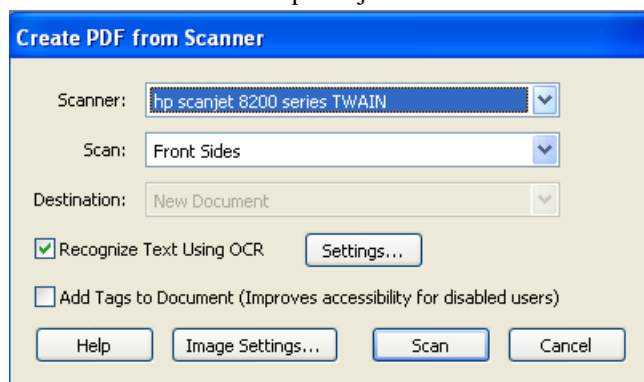
- On the toolbar click “Create PDF”



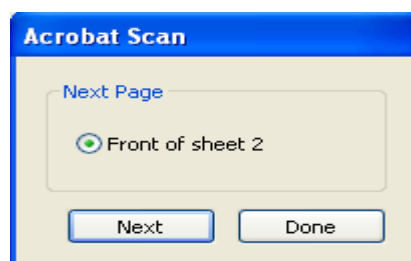
Then choose “From Scanner”



- Choose the scanner “hp scanjet 8200 series TWAIN”




- Then Press Scan.
- After you scan the document a second window will appear, click on the accept icon to accept the document. If you are scanning more than one picture or document click “Next”. This will add all your documents to one file. If you are finish, click “Done”.





# IT Support Help Desk

## Accessing IT Support Help Desk



The IT Support Help Desk located in the Library Resource Center (LRC) provides **limited** PC support to students.

What we provide:

- Laptop configuration to access study material wirelessly on-campus

- Manage Students' Antivirus Security

- Basic troubleshooting on software/ hardware problems for certain hardware installations

- Audio/ visual help for faculty and visiting lecturers

- Provide suggestions for on-island computer repairs

By managing Students' Antivirus Security, IT Support can contact students and alert them of security risks and/or ask the student to bring in their laptops so that we may assist them with any vulnerabilities.

We can be contacted via email at [skitsupport@rossvet.edu.kn](mailto:skitsupport@rossvet.edu.kn) or 465-4161 ext 111.

Office Hours: 7:30am – 5pm

Disclaimer: Repairs are completed on a “best effort” basis and the turnaround time could be same day or up to 7 days according to the nature of the issue. Please understand that SK IT SUPPORT's first responsibility is to Ross University-owned machines, however we do support student equipment on above-mentioned “best effort” basis.

**SELECT LIST  
OF  
RECENT ADDITIONS TO THE COLLECTION**

**Animal physiotherapy: assessment, treatment and rehabilitation of animals** / editors, Catherine M. McGowan, Lesley Goff, Narelle Stubbs. – Ames, Iowa : Blackwell Pub., 2007. <<SF 925 .A55n 2007>>

**Avian and exotic animal hematology and cytology** / Terry W. Campbell and Christine K. Ellis. – 2<sup>nd</sup> ed. – Ames, Iowa : Blackwell Pub., 2007. <<SF 994 .C35 2007>>

**Blackwell's five-minute veterinary practice management consult** / [edited by] Lowell Ackerman. – Ames, Iowa : Blackwell Pub., 2007. <<SF 756.4 .B53 2007>>

**Blackwell's five-minute veterinary consult clinical companion : canine and feline behavior** / Debra F. Horwitz, Jacqueline C. Neilson. – Ames, Iowa : Blackwell Pub., 2007. <<SF 433 .H76 2007>>

**Cardiovascular disease in small animal medicine** / Wendy A. Ware. – London : Manson Pub./Veterinary Press, 2007. <<SF 811 .W37 2007>>

**Clinical laboratory animal medicine : an introduction** / Karen Hrapkiewicz, Leticia Medina. – 3<sup>rd</sup> ed. – Ames, Iowa : Blackwell Pub., 2007. <<SF 996.5 .H65 2007>>

**Color atlas of farm animal dermatology** / Danny W. Scott. – Ames, Iowa : Blackwell Pub., 2007. <<SF 901 .S37 2007>>

**Comparative reproductive biology** / edited by Heide Schatten, Gheorghe M. Constantinescu. – Ames, Iowa : Blackwell Pub., 2007. <<SF 871 .C56 2007>>

**Differential diagnosis in small animal medicine** / by Alex Gough. – Ames, Iowa : Blackwell Pub., 2007. <<SF 991 .G672 2007>>

**Diseases of sheep** / edited by I. D. Aitken. – Ames, Iowa : Blackwell Pub., 2007. <<SF 968 .D465 2007>>

**Equine injury, therapy and rehabilitation** / Mary W. Bromiley; drawings by Penelope slattery; photographs by Penelope Slattery and the author. – 3<sup>rd</sup> ed. – Ames, Iowa : Blackwell Pub., 2007. <<SF 951 .B86 2007>>

**Evidence-based medicine in Sherlock Holmes' footsteps** / Jorgen Nordenstorm. – Malden, M.A. : Blackwell Pub., 2007. <<R 723.7 .N67 2007>>

**Feline orthopedics** / Harry W. Scott, Ronald McLaughlin. – London, UK : Manson Pub./The Veterinary Press, 2007>>

**Introduction to veterinary and comparative forensic medicine** / John E. Cooper, Margaret E. Cooper. – Ames, Iowa : Blackwell Pub., 2007. <<SF 769.47 .C66 2007>>

**Laboratory animal law : legal control of the use of animals in research** / Kevin Dolan. – 2<sup>nd</sup> ed. – Ames, Iowa : Blackwell Pub., 2007 <<KD 3426 .D65 2007>>

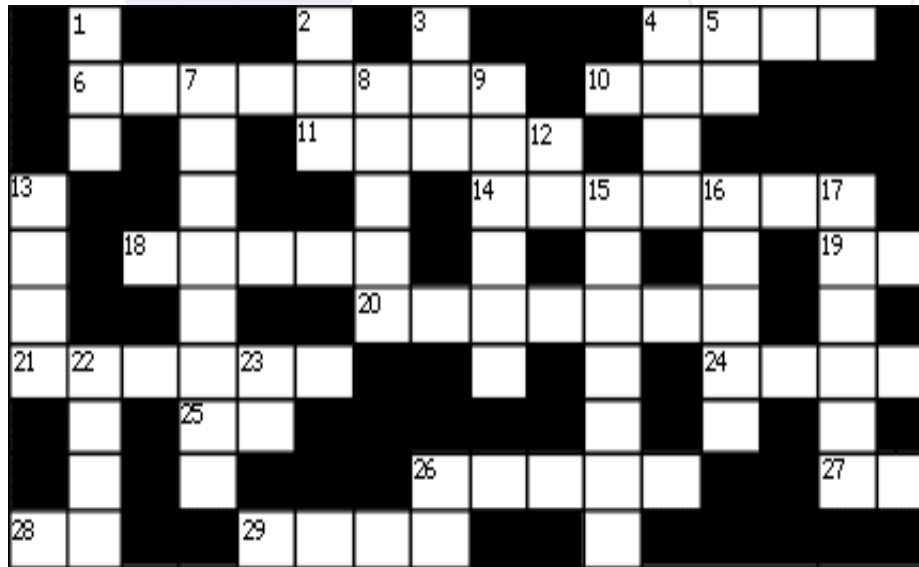
**Lumb & Jones' veterinary anesthesia and analgesia 4<sup>th</sup> ed.** / edited by William J. Rranquilli, John C. Thurmon, Kurt A. Grimm. – Ames, Iowa : Blackwell Pub., 2007. <<SF 914 .L82 2007>>

**Manual of animal technology** / edited by Stephen W. Barnett; with assistance from Jasmine Barley, Roger Francis, Sarah Lane; foreword by Richard Gardener. – Ames, Iowa : Blackwell Pub., 2007. <<SF 406 .I56 2007>>

**Self-assessment colour review of veterinary cytology : dog, cat, horse and cow** / Kathleen P. Freeman. – London : Manson Pub./The Veterinary Press, 2007. <<SF 757.25 .F74 2007>>

**Veterinary forensic : animal cruelty investigations** / Melinda D. Merck, editor. – Ames, Iowa : Blackwell Pub., 2007. <<SF 769.47 .V48 2007>>

**Veterinary ophthalmology** / edited by Kirk N. Gelatt. – 4<sup>th</sup> ed. – 2 v. – Ames, Iowa : Blackwell Pub., 2007 <<SF 891 .V48 2007>>



### Across

- Poisonous toad
- Disease caused by low insulin levels
- Snake that constricts its prey
- Channel in a bone, e.g.; nasal \_\_\_\_
- Reflective area at the back of the eye
- Ingest water
- Highest level after CD (Companion Dog) & CDX (Companion Dog Excellent) in obedience trials
- Tumor sometimes associated with exposure to ultraviolet light or vaccination
- Network of veins or nerves, e.g.; solar \_\_\_\_
- Pouch-like organ at the beginning of the large intestine (pl.)
- Acronym for "intravenous"
- Hair-like structure used for movement by protozoa
- Acronym for "electron microscope"
- Acronym for "lupus erythematosus"
- Zoonosis transmitted by cat feces or eating raw or undercooked meat (abbrev.)

### Down

- Acronym for "antidiuretic hormone"
- Acronym for the estrogenic hormone used to treat incontinence in dogs
- Age in weeks when vision is fully developed in a puppy
- An ulna, radius or femur, for example
- Acronym for "urinalysis"
- Lack of appetite
- Transmit Lyme disease
- Material used in surgery to close a wound
- Acronym for sinoatrial node in the heart
- Rounded projection such as on a tooth or heart valve
- Compound made from amino acids
- Series of tissues or organs, e.g.; respiratory \_\_\_\_, digestive \_\_\_\_
- Cardiac \_\_\_\_, smooth \_\_\_\_, or striated \_\_\_\_
- A defined section of an organ, e.g.; in the liver, lung, or brain
- Acronym for "ultraviolet"
- Acronym for "carbon monoxide"

